










Worklist: 1264

central data reviewed by B. Wylie on 9/6/16

B. Wylie

<u>LAB_CASE</u>	<u>ITEM</u>	<u>TASK_ID</u>	<u>DESCRIPTION</u>	
C2016-0299	1	64007	6.1.2 Blood Cannabinoids by LC	
C2016-0527	2	64008	6.1.2 Blood Cannabinoids by LC	
C2016-1014	1	64009	6.1.2 Blood Cannabinoids by LC	
C2016-1109	1	64012	6.1.2 Blood Cannabinoids by LC	
C2016-1169	2	64014	6.1.2 Blood Cannabinoids by LC	
C2016-1170	2	64021	6.1.2 Blood Cannabinoids by LC	
C2016-1321	1	64016	6.1.2 Blood Cannabinoids by LC	
M2016-2853	3	64017	6.1.2 Blood Cannabinoids by LC	
P2016-0763	1	64018	6.1.2 Blood Cannabinoids by LC	

Worklist Report

Worklist Path:	C:\MassHunter\ISP Methods\worklists\CS Combined 083116.wkl
Date Modified:	08/31/2016 10:43:27 AM
Date Printed:	08/31/2016 10:43:55 AM

Worklist Run Parameters

Operator Name:	62340
Run Type:	Standard Start
Part of Method to Run:	Acquisition Only
Execution for Acquisition-DA:	Synchronous
Acquisition Method Path:	C:\MassHunter\ISP Methods\Acquisition
DA Method Path:	D:\MassHunter\methods
Data File Path:	C:\MassHunter\Data\2016\Combined\072216 CS
Pre-Worklist Script:	---
Post-Worklist Script:	SCP_InstrumentStandby(){MH_Acq_Scripts.exe}
Acquisition Clean Up Script:	SCP_InstrumentStandby(){MH_Acq_Scripts.exe}
Overlapped Injection:	No
Clear sample selection after run:	Yes
Wait Time for Ready(Min):	10
Threshold Disk Value(GB):	10
Comment:	---

Plate Barcode Information

Plate	Barcode
P1	
P2	

Worklist Table

Sample Position	Sample Name	Method	Data File	Sample Type	Level Name	Comment	Info.
P2-A1	Blank	isp blood cannabinoids Poky 2016-1.m	Blank1-r001.d	Blank		AM 6.1.2 Cannabinoids by LCQQQ	
P2-A1	Blank	isp blood cannabinoids Poky 2016-1.m	Blank2-r001.d	Blank		AM 6.1.2 Cannabinoids by LCQQQ	
P2-A2	Blood: 1_5 ng/mL	isp blood cannabinoids Poky 2016-1.m	B_CAL1-r001.d	Calibration	1	AM 6.1.2 Cannabinoids by LCQQQ	c-THC @5ng/mL, all others @1 ng/mL
P2-A3	Blood: 2_10 ng/mL	isp blood cannabinoids Poky 2016-1.m	B_CAL2_r001.d	Calibration	2	AM 6.1.2 Cannabinoids by LCQQQ	c-THC @10ng/mL, all others @2 ng/mL
P2-A4	Blood: 5_25 ng/mL	isp blood cannabinoids Poky 2016-1.m	B_CAL3_r001.d	Calibration	3	AM 6.1.2 Cannabinoids by LCQQQ	c-THC @25ng/mL, all others @5 ng/mL
P2-A5	Blood: 10_50 ng/mL	isp blood cannabinoids Poky 2016-1.m	B_CAL4_r001.d	Calibration	4	AM 6.1.2 Cannabinoids by LCQQQ	c-THC @50ng/mL, all others @10 ng/mL
P2-A6		isp blood cannabinoids Poky 2016-1.m	B_CAL5_r001.d	Calibration	5		c-THC @125ng/mL, all

Sample Position	Sample Name	Method	Data File	Sample Type	Level Name	Comment	Info. ٢
	Blood: 25_125 ngmL					AM 6.1.2 Cannabinoids by LCQQQ	others @25 ng/mL
P2-A7	Blood: 50_250 ngmL	isp blood cannabinoids Poky 2016-1.m	B_CAL6_r001.d	Calibration	6	AM 6.1.2 Cannabinoids by LCQQQ	c-THC @250ng/mL, all others @50 ng/mL
P2-A8	Blood: 100_500 ngmL	isp blood cannabinoids Poky 2016-1.m	B_CAL7_r001.d	Calibration	7	AM 6.1.2 Cannabinoids by LCQQQ	c-THC @500ng/mL, all others @100 ng/mL
P2-A1	Blank	isp blood cannabinoids Poky 2016-1.m	Carryover blank1_r001.d	Blank		AM 6.1.2 Cannabinoids by LCQQQ	
P2-A9	Blood Negative Control	isp blood cannabinoids Poky 2016-1.m	B-NC-r001.d	Sample		AM 6.1.2 Cannabinoids by LCQQQ	Negative Blood UTAK Lot B1013
P2-B1	Blood PC 1	isp blood cannabinoids Poky 2016-1.m	B-POS Ctrl 1-r001.d	Sample		AM 6.1.2 Cannabinoids by LCQQQ	Positive Control-UTAK B1013 + WS060716
P2-A1	Blank	isp blood cannabinoids Poky 2016-1.m	Carryover blank2_r001.d	Blank		AM 6.1.2 Cannabinoids by LCQQQ	
P2-A9	Blank C2016-0299-1	isp blood cannabinoids Poky 2016-1.m	C2016-0299-1_BLK_r001.d	Blank		AM 6.1.2 Cannabinoids by LCQQQ	
P2-B2	C2016-0299-1	isp blood cannabinoids Poky 2016-1.m	C2016-0299-1-r001.d	Sample		AM 6.1.2 Cannabinoids by LCQQQ	Blood
P2-A9	Blank C2016-0527-2	isp blood cannabinoids Poky 2016-1.m	C2016-0527-2_BLK_r001.d	Blank		AM 6.1.2 Cannabinoids by LCQQQ	
P2-B3	C2016-0527-2	isp blood cannabinoids Poky 2016-1.m	C2016-0527-2-r001.d	Sample		AM 6.1.2 Cannabinoids by LCQQQ	Blood
P2-A9	Blank C2016-1014-1	isp blood cannabinoids Poky 2016-1.m	C2016-1014-1_BLK_r001.d	Blank		AM 6.1.2 Cannabinoids by LCQQQ	
P2-B4	C2016-1014-1	isp blood cannabinoids Poky 2016-1.m	C2016-1014-1-r001.d	Sample		AM 6.1.2 Cannabinoids by LCQQQ	Blood
P2-A9	Blank C2016-1109-1	isp blood cannabinoids Poky 2016-1.m	C2016-1109-1_BLK_r001.d	Blank		AM 6.1.2 Cannabinoids by LCQQQ	
P2-B5	C2016-1109-1	isp blood cannabinoids Poky 2016-1.m	C2016-1109-1-r001.d	Sample		AM 6.1.2 Cannabinoids by LCQQQ	Blood
P2-A9	Blank C2016-1169-2	isp blood cannabinoids Poky 2016-1.m	C2016-1169-2_BLK_r001.d	Blank		AM 6.1.2 Cannabinoids by LCQQQ	
P2-B6	C2016-1169-2	isp blood cannabinoids Poky 2016-1.m	C2016-1169-2-r001.d	Sample		AM 6.1.2 Cannabinoids by LCQQQ	Blood
P2-A1	Blank	isp blood cannabinoids Poky 2016-1.m	cann-Carryover blank3_r001.d	Blank		AM 6.1.2 Cannabinoids by LCQQQ	
P2-C3	Blood PC 2	isp blood cannabinoids Poky 2016-1.m	B-POS Ctrl 2-r001.d	Sample		AM 6.1.2 Cannabinoids by LCQQQ	Positive Control-UTAK B1013 + WS060716
P2-A1	Blank	isp blood cannabinoids Poky 2016-1.m	Carryover blank4_r001.d	Blank		AM 6.1.2 Cannabinoids by LCQQQ	

Sample Position	Sample Name	Method	Data File	Sample Type	Level Name	Comment	Info. 
P2-A9	Blank C2016-1170-2	isp blood cannabinoids Poky 2016-1.m	C2016-1170-2_BLK_r001.d	Blank		AM 6.1.2 Cannabinoids by LCQQQ	
P2-B7	C2016-1170-2	isp blood cannabinoids Poky 2016-1.m	C2016-1170-2-r001.d	Sample		AM 6.1.2 Cannabinoids by LCQQQ	Blood
P2-A9	Blank C2016-1321-1	isp blood cannabinoids Poky 2016-1.m	C2016-1321-1_BLK_r001.d	Blank		AM 6.1.2 Cannabinoids by LCQQQ	
P2-B8	C2016-1321-1	isp blood cannabinoids Poky 2016-1.m	C2016-1321-1-r001.d	Sample		AM 6.1.2 Cannabinoids by LCQQQ	Blood
P2-A9	Blank M2016-2853-3	isp blood cannabinoids Poky 2016-1.m	M2016-2853-3_BLK_r001.d	Blank		AM 6.1.2 Cannabinoids by LCQQQ	
P2-B9	M2016-2853-3	isp blood cannabinoids Poky 2016-1.m	M2016-2853-3-r001.d	Sample		AM 6.1.2 Cannabinoids by LCQQQ	Blood
P2-A9	Blank P2016-0763-1	isp blood cannabinoids Poky 2016-1.m	P2016-0763-1_BLK_r001.d	Blank		AM 6.1.2 Cannabinoids by LCQQQ	
P2-C1	P2016-0763-1	isp blood cannabinoids Poky 2016-1.m	P2016-0763-1-r001.d	Sample		AM 6.1.2 Cannabinoids by LCQQQ	Blood
P2-A1	Blank	isp blood cannabinoids Poky 2016-1.m	Blank3-r001.d	Blank		AM 6.1.2 Cannabinoids by LCQQQ	Blood
P1-F9	Blank	Benzos_Z_Drugs_ACN_FA_ISP_2016.m	BZ-Blank1-r001.d	Blank		AM 6.1.1 Benzo and Z by LCQQQ	Blood
P1-F9	Blank	Benzos_Z_Drugs_ACN_FA_ISP_2016.m	BZ-Blank2-r001.d	Blank		AM 6.1.1 Benzo and Z by LCQQQ	Blood
P1-F7	10 ngmL	Benzos_Z_Drugs_ACN_FA_ISP_2016.m	BZ-10 ngmL-r001.d	Calibration	2	AM 6.1.1 Benzo and Z by LCQQQ	
P1-F6	25 ngmL	Benzos_Z_Drugs_ACN_FA_ISP_2016.m	BZ-25 ngmL_r001.d	Calibration	3	AM 6.1.1 Benzo and Z by LCQQQ	
P1-F5	50 ngmL	Benzos_Z_Drugs_ACN_FA_ISP_2016.m	BZ-50 ngmL_r001.d	Calibration	4	AM 6.1.1 Benzo and Z by LCQQQ	
P1-F4	100 ngmL	Benzos_Z_Drugs_ACN_FA_ISP_2016.m	BZ-100 ngmL_r001.d	Calibration	5	AM 6.1.1 Benzo and Z by LCQQQ	
P1-F3	500 ngmL	Benzos_Z_Drugs_ACN_FA_ISP_2016.m	BZ-500 ngmL_r001.d	Calibration	6	AM 6.1.1 Benzo and Z by LCQQQ	
P1-F2	1000 ngmL	Benzos_Z_Drugs_ACN_FA_ISP_2016.m	BZ-1000 ngmL_r001.d	Calibration	7	AM 6.1.1 Benzo and Z by LCQQQ	
P1-F1	3000 ngmL	Benzos_Z_Drugs_ACN_FA_ISP_2016.m	BZ-3000 ngmL_r001.d	Calibration	8	AM 6.1.1 Benzo and Z by LCQQQ	
P1-F9	Blank	Benzos_Z_Drugs_ACN_FA_ISP_2016.m	BZ-Carryover blank1_r001.d	Blank		AM 6.1.1 Benzo and Z by LCQQQ	
P1-E9	Negative Blood Control	Benzos_Z_Drugs_ACN_FA_ISP_2016.m	BZ-NC-B_r001.d	Sample		AM 6.1.1 Benzo and Z by LCQQQ	UTAK Negative Whole Blood LOT B1013
P1-E8		Benzos_Z_Drugs_ACN_FA_ISP_2016.m	BZ-PC-B-r001.d	Sample			Benzodiazepines Mix Cerilliant lot

Sample Position	Sample Name	Method	Data File	Sample Type	Level Name	Comment	Info. ٢٣
	Positive Blood Control					AM 6.1.1 Benzo and Z by LCQQQ	FE012413-02 in UTAK LOT B1013
P1-E9	Blank - C2016-1059-1	Benzos_Z_Drugs_ACN_FA_ISP_2016.m	BZ-Carryover blank-C2016-1059-1_r001.d	Blank		AM 6.1.1 Benzo and Z by LCQQQ	
P1-E7	C2016-1059-1	Benzos_Z_Drugs_ACN_FA_ISP_2016.m	BZ-C2016-1059-1-r001.d	Sample		AM 6.1.1 Benzo and Z by LCQQQ	Blood
P1-E9	Blank - C2016-1109-1	Benzos_Z_Drugs_ACN_FA_ISP_2016.m	BZ-Carryover blank-C2016-1109-1_r001.d	Blank		AM 6.1.1 Benzo and Z by LCQQQ	
P1-E6	C2016-1109-1	Benzos_Z_Drugs_ACN_FA_ISP_2016.m	BZ-C2016-1109-1-r001.d	Sample		AM 6.1.1 Benzo and Z by LCQQQ	Blood
P1-E9	Blank - C2016-1169-2	Benzos_Z_Drugs_ACN_FA_ISP_2016.m	BZ-Carryover blank-C2016-1169-2_r001.d	Blank		AM 6.1.1 Benzo and Z by LCQQQ	
P1-E5	C2016-1169-2	Benzos_Z_Drugs_ACN_FA_ISP_2016.m	BZ-C2016-1169-2-r001.d	Sample		AM 6.1.1 Benzo and Z by LCQQQ	Blood
P1-E9	Blank - P2016-1689-1	Benzos_Z_Drugs_ACN_FA_ISP_2016.m	BZ-Carryover blank-P2016-1689-1_r001.d	Blank		AM 6.1.1 Benzo and Z by LCQQQ	
P1-E4	P2016-1689-1	Benzos_Z_Drugs_ACN_FA_ISP_2016.m	BZ-P2016-1689-1-r001.d	Sample		AM 6.1.1 Benzo and Z by LCQQQ	Blood
P1-F9	Blank	Benzos_Z_Drugs_ACN_FA_ISP_2016.m	BZ-Carryover blank3_r001.d	Blank		AM 6.1.1 Benzo and Z by LCQQQ	

ISP Forensics Calibration Curve Report

Batch Data Path I:\Pocatello\Abby\2016\Combined\083116 CS\QuantResults\8312016 Pocatello THC.batch.bin

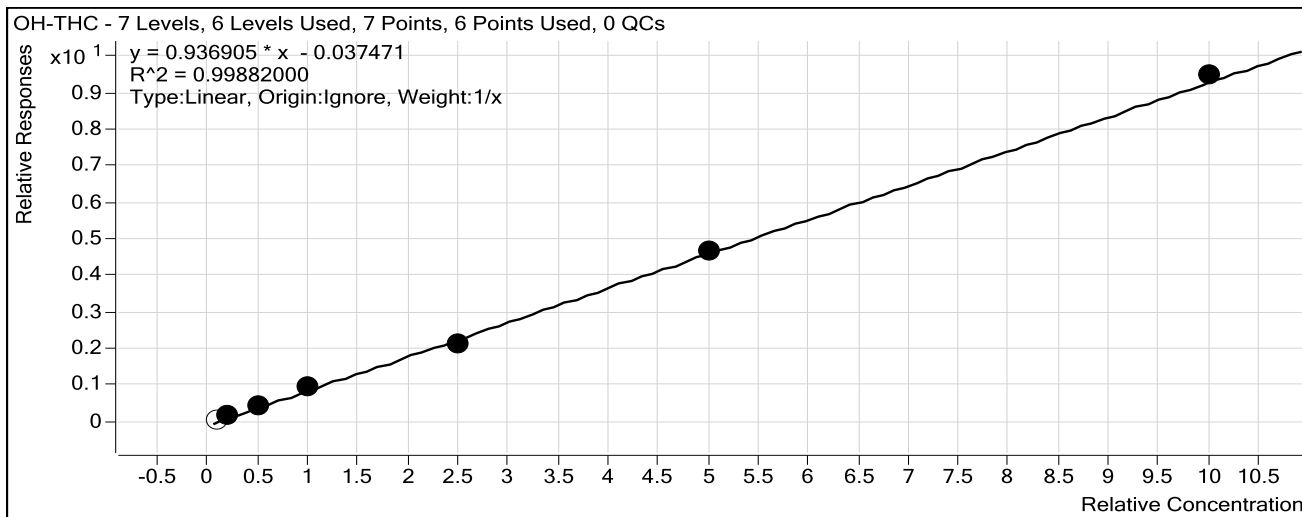
Last Calib Update 9/2/2016 7:35 AM

Analyst Name

ISP TOX

Target Compound OH-THC

Internal Standard OH-THC-d3



Sample	Level	Enabled	Exp Conc	Final Conc	Accuracy
Blood: 1_5 ng/mL	1	<input type="checkbox"/>	1	1.2	120.9
Blood: 2_10 ng/mL	2	<input checked="" type="checkbox"/>	2	2.0	101.4
Blood: 5_25 ng/mL	3	<input checked="" type="checkbox"/>	5	5.1	101.2
Blood: 10_50 ng/mL	4	<input checked="" type="checkbox"/>	10	10.3	103.5
Blood: 25_125 ng/mL	5	<input checked="" type="checkbox"/>	25	23.1	92.4
Blood: 50_250 ng/mL	6	<input checked="" type="checkbox"/>	50	50.0	100.1
Blood: 100_500 ng/mL	7	<input checked="" type="checkbox"/>	100	101.4	101.4

ISP Forensics Calibration Curve Report

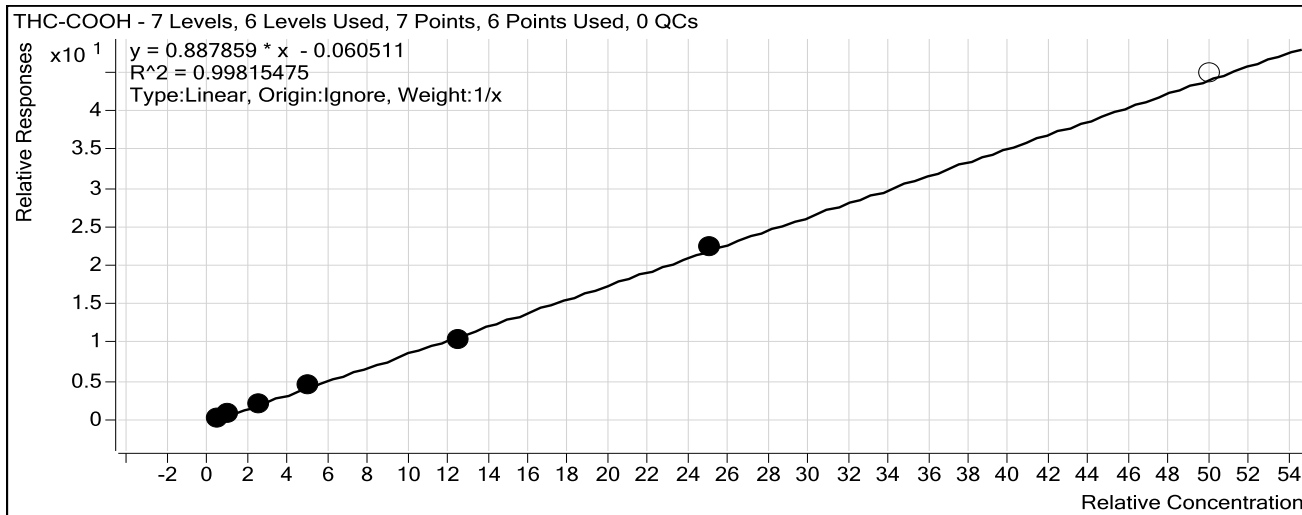
Batch Data Path I:\Pocatello\Abby\2016\Combined\083116 CS\QuantResults\8312016 Pocatello THC.batch.bin

Last Calib Update 9/2/2016 7:35 AM

Analyst Name ISP TOX

Target Compound *THC-COOH*

Internal Standard *THC-COOH-d3*



Sample	Level	Enabled	Exp Conc	Final Conc	Accuracy
Blood: 1_5 ng/mL	1	<input checked="" type="checkbox"/>	5	5.0	99.5
Blood: 2_10 ng/mL	2	<input checked="" type="checkbox"/>	10	9.5	95.5
Blood: 5_25 ng/mL	3	<input checked="" type="checkbox"/>	25	25.4	101.6
Blood: 10_50 ng/mL	4	<input checked="" type="checkbox"/>	50	53.8	107.5
Blood: 25_125 ng/mL	5	<input checked="" type="checkbox"/>	125	118.5	94.8
Blood: 50_250 ng/mL	6	<input checked="" type="checkbox"/>	250	252.8	101.1
Blood: 100_500 ng/mL	7	<input type="checkbox"/>	500	506.1	101.2

ISP Forensics Calibration Curve Report

CS

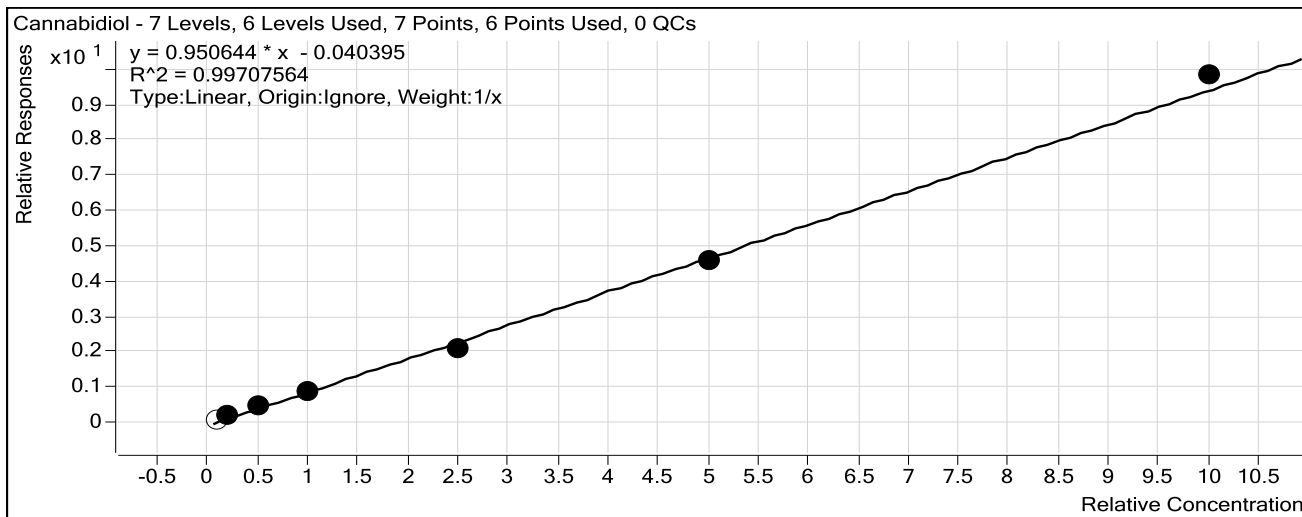
Batch Data Path I:\Pocatello\Abby\2016\Combined\083116 CS\QuantResults\8312016 Pocatello THC.batch.bin

Last Calib Update 9/2/2016 7:35 AM

Analyst Name ISP TOX

Target Compound *Cannabidiol*

Internal Standard *Cannabidiol-d3*



Sample	Level	Enabled	Exp Conc	Final Conc	Accuracy
Blood: 1_5 ng/mL	1	<input type="checkbox"/>	1	1.4	142.1
Blood: 2_10 ng/mL	2	<input checked="" type="checkbox"/>	2	2.2	110.4
Blood: 5_25 ng/mL	3	<input checked="" type="checkbox"/>	5	5.0	100.9
Blood: 10_50 ng/mL	4	<input checked="" type="checkbox"/>	10	9.7	97.3
Blood: 25_125 ng/mL	5	<input checked="" type="checkbox"/>	25	22.6	90.3
Blood: 50_250 ng/mL	6	<input checked="" type="checkbox"/>	50	48.7	97.3
Blood: 100_500 ng/mL	7	<input checked="" type="checkbox"/>	100	103.8	103.8

ISP Forensics Calibration Curve Report

Batch Data Path I:\Pocatello\Abby\2016\Combined\083116 CS\QuantResults\8312016 Pocatello THC.batch.bin

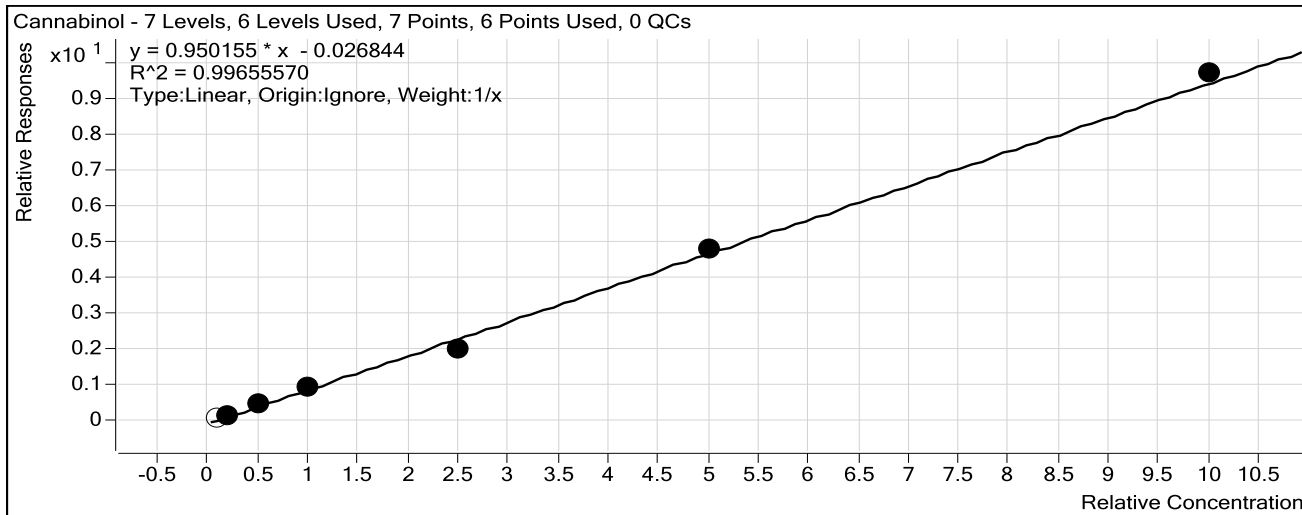
Last Calib Update 9/2/2016 7:35 AM

Analyst Name

ISP TOX

Target Compound *Cannabinol*

Internal Standard *Cannabinol-d3*



Sample	Level	Enabled	Exp Conc	Final Conc	Accuracy
Blood: 1_5 ng/mL	1	<input type="checkbox"/>	1	1.5	147.8
Blood: 2_10 ng/mL	2	<input checked="" type="checkbox"/>	2	2.1	107.2
Blood: 5_25 ng/mL	3	<input checked="" type="checkbox"/>	5	5.1	102.4
Blood: 10_50 ng/mL	4	<input checked="" type="checkbox"/>	10	10.0	99.8
Blood: 25_125 ng/mL	5	<input checked="" type="checkbox"/>	25	21.7	86.7
Blood: 50_250 ng/mL	6	<input checked="" type="checkbox"/>	50	50.8	101.5
Blood: 100_500 ng/mL	7	<input checked="" type="checkbox"/>	100	102.3	102.3

ISP Forensics Calibration Curve Report

Batch Data Path I:\Pocatello\Abby\2016\Combined\083116 CS\QuantResults\8312016 Pocatello THC.batch.bin

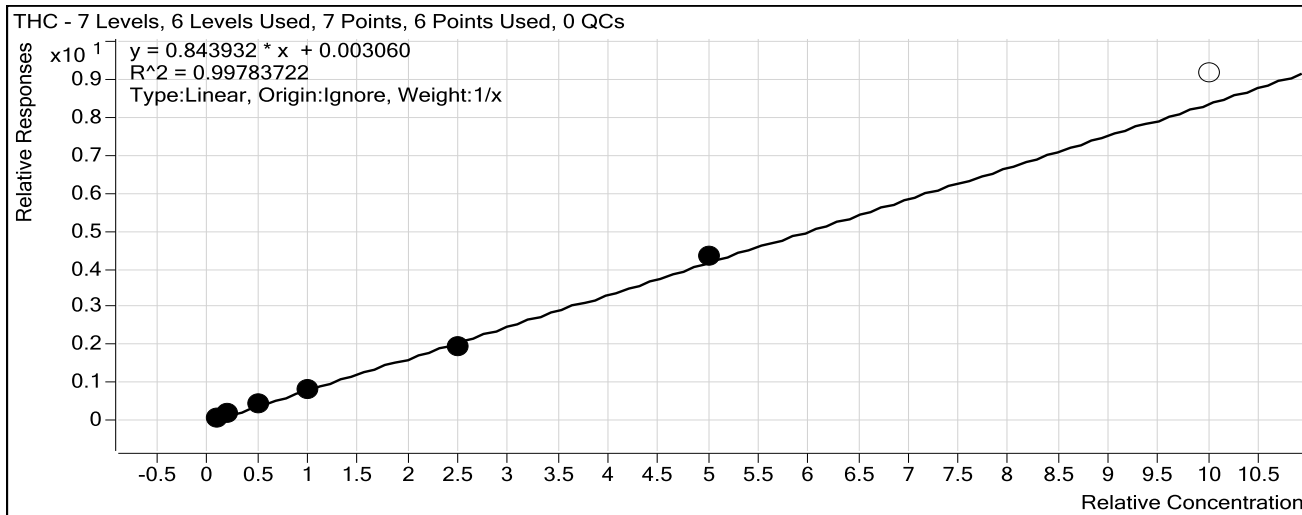
Last Calib Update 9/2/2016 7:35 AM

Analyst Name

ISP TOX

Target Compound *THC*

Internal Standard *THC-d3*



Sample	Level	Enabled	Exp Conc	Final Conc	Accuracy
Blood: 1_5 ng/mL	1	<input checked="" type="checkbox"/>	1	1.0	102.5
Blood: 2_10 ng/mL	2	<input checked="" type="checkbox"/>	2	2.0	99.1
Blood: 5_25 ng/mL	3	<input checked="" type="checkbox"/>	5	5.2	104.0
Blood: 10_50 ng/mL	4	<input checked="" type="checkbox"/>	10	9.7	97.3
Blood: 25_125 ng/mL	5	<input checked="" type="checkbox"/>	25	23.5	93.9
Blood: 50_250 ng/mL	6	<input checked="" type="checkbox"/>	50	51.6	103.2
Blood: 100_500 ng/mL	7	<input type="checkbox"/>	100	108.8	108.8

69

ISP FORENSICS

Pocatello

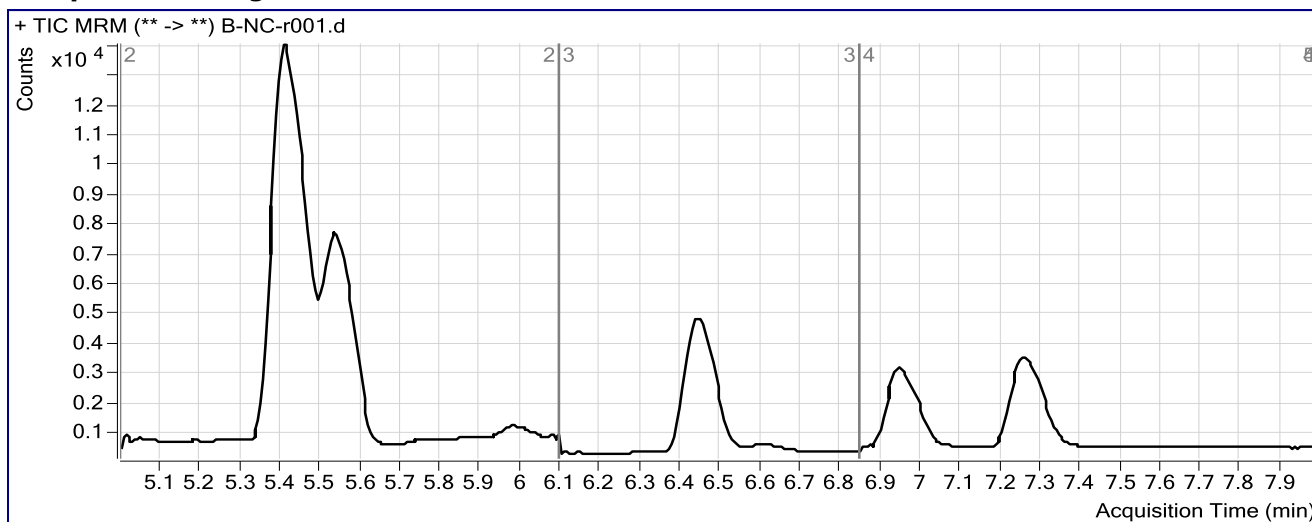
Cannabinoid Analysis Report

Batch Data Path	I:\Pocatello\Abby\2016\Combined\083116 CS\QuantResults\8312016 Pocatello THC.batch.bin		
Analysis Time	9/6/2016 10:30 AM	Analyst Name	ISPUser
Report Time	9/6/2016 10:34 AM	Reporter Name	ISPUser
Last Calib Update	9/6/2016 10:30 AM	Batch State	Processed

Analysis Info

Acq Time	2016-08-31 11:58	Data File	B-NC-r001.d
Sample Type	Sample	Sample Name	Blood Negative Control
Dilution	1	Acq Method	isp blood cannabinoids Poky 2016-1.m
Position	P2-A9	Sample Info	Negative Blood UTAK Lot B1013
Inj Vol	-1	Comment	AM 6.1.2 Cannabinoids by LCQQQ

Sample Chromatogram



69

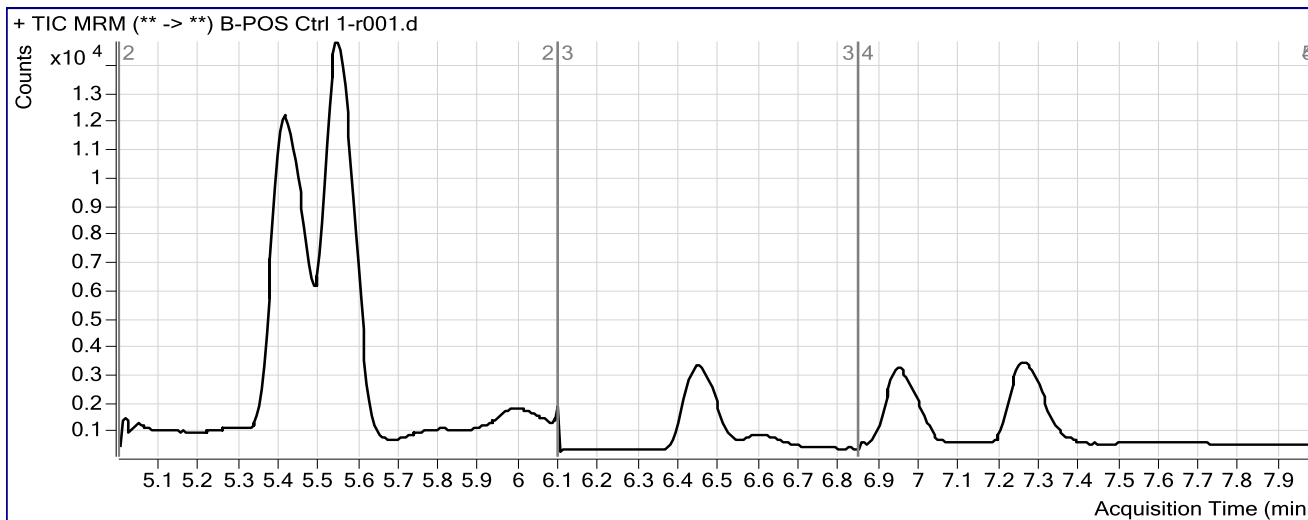
ISP FORENSICS Pocatello Cannabinoid Analysis Report

Batch Data Path I:\Pocatello\Abby\2016\Combined\083116 CS\QuantResults\8312016 Pocatello THC.batch.bin
Analysis Time 9/6/2016 10:30 AM **Analyst Name** ISPUser
Report Time 9/6/2016 10:34 AM **Reporter Name** ISPUser
Last Calib Update 9/6/2016 10:30 AM **Batch State** Processed

Analysis Info

Acq Time 2016-08-31 12:12 **Data File** B-POS Ctrl 1-r001.d
Sample Type Sample **Sample Name** Blood PC 1
Dilution 1 **Acq Method** isp blood cannabinoids Poky 2016-1.m
Position P2-B1 **Sample Info** Positive Control- UTAK B1013 + WS060716
Inj Vol -1 **Comment** AM 6.1.2 Cannabinoids by LCQQQ

Sample Chromatogram



Results

Compound	ISTD Compound	RT	Response	ISTD Resp	Resp Ratio	Final Conc
THC-COOH	THC-COOH-d3	5.552	14638	11773	1.2434	14.6491
Cannabinol	Cannabinol-d3	6.956	2486	8477	0.2933	3.3693
THC	THC-d3	7.261	1647	5865	0.2809	3.2924

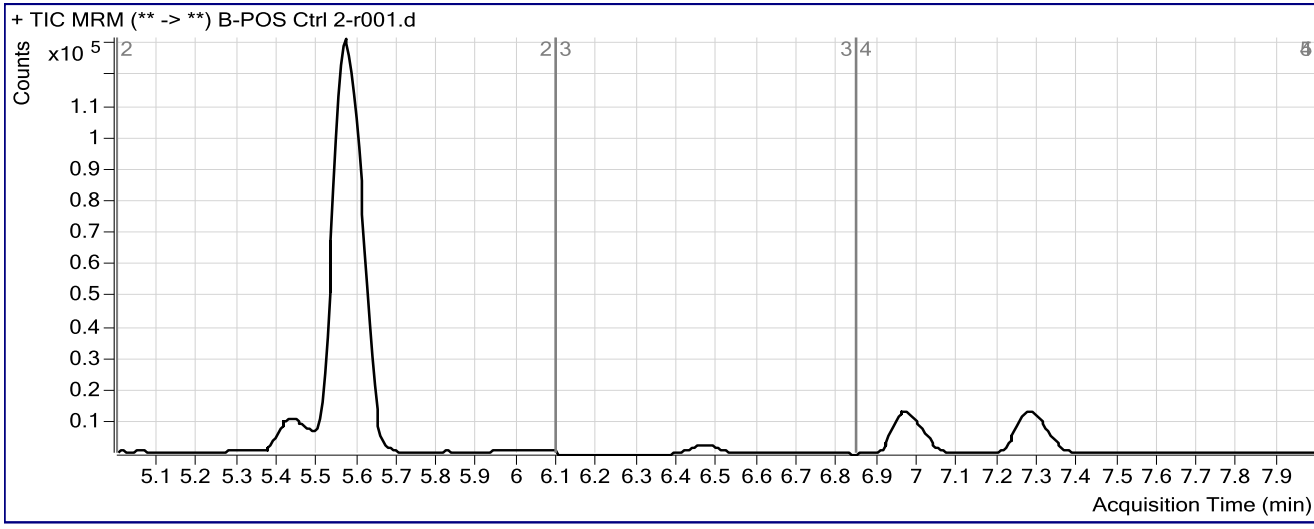
ISP FORENSICS Pocatello Cannabinoid Analysis Report

Batch Data Path I:\Pocatello\Abby\2016\Combined\083116 CS\QuantResults\8312016 Pocatello THC.batch.bin
Analysis Time 9/6/2016 10:30 AM **Analyst Name** ISPUser
Report Time 9/6/2016 10:36 AM **Reporter Name** ISPUser
Last Calib Update 9/6/2016 10:30 AM **Batch State** Processed

Analysis Info

Acq Time 2016-08-31 15:04 **Data File** B-POS Ctrl 2-r001.d
Sample Type Sample **Sample Name** Blood PC 2
Dilution 1 **Acq Method** isp blood cannabinoids Poky 2016-1.m
Position P2-C3 **Sample Info** Positive Control- UTAK B1013 + WS060716
Inj Vol -1 **Comment** AM 6.1.2 Cannabinoids by LCQQQ

Sample Chromatogram



Results

Compound	ISTD Compound	RT	Response	ISTD Resp	Resp Ratio	Final Conc
THC-COOH	THC-COOH-d3	5.575	242056	10747	22.5239	254.4293
Cannabidiol	Cannabidiol-d3	6.466	96	6325	0.0151	0.9875
Cannabinol	Cannabinol-d3	6.967	38157	6753	5.6502	59.7486
THC	THC-d3	7.278	22297	5892	3.7843	44.8053